

# Health College Connection

Sponsored by The Robert Wood  
Johnson Foundation's Southern Rural  
Access Program

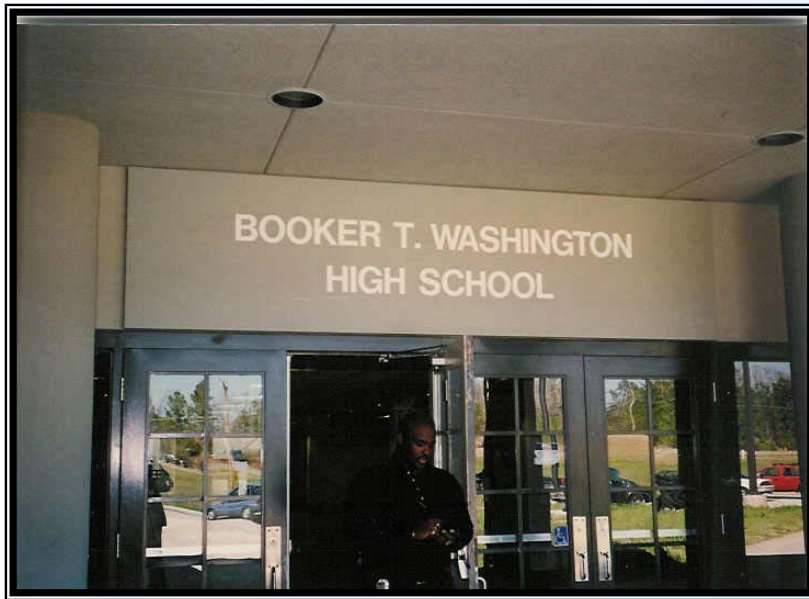
Presented by Benjamin P. Rackley  
Executive Director, TAHEC, Inc.

# History of The Health College Connection

In 1994, TAHEC began a program to increase local high school students' knowledge of different major health conditions common in the Black Belt and health professions that could address the conditions.



# History of the Health College Connection (cont.)



- Booker T. Washington High School in Tuskegee Alabama was chosen as VA Partnership institution. This provided an opportunity for VA staff to work with students and faculty in ways that enhanced computer training, speakers bureau, etc. Moreover, TAHEC established a Health Careers Club at BTW for students grades 8-12.

## History of the Health College Connection (cont.)



- The program included students in grades eight through twelve. This program is called the Health College Connection Program.

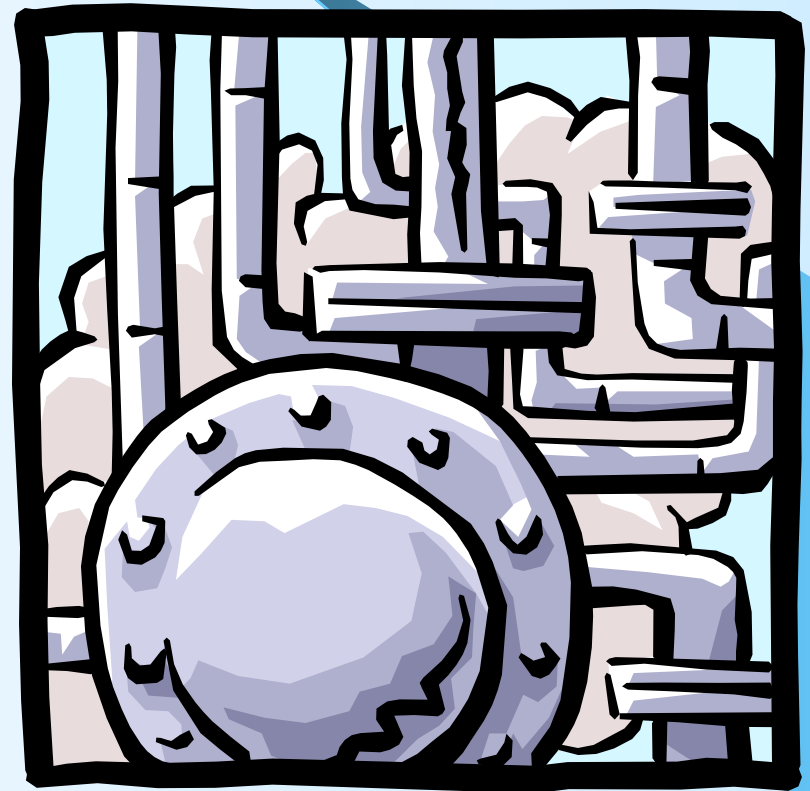
## History of the Health College Connection (cont.)



- The speaker's bureau included accomplished physicians and others from a variety of settings in addition to CAVHCS.

## History of the Health College Connection (cont.)

- The rural leaders pipeline program grew out of the Health College Connection Program and is called Health College Connection Program II (HCCP II).



# About the Health College Connection Program II

- What?

A year-round program designed to identify, prepare and increase the number of minority students who participate in the Rural Medical Partnership Pipeline; and ultimately into the Minority Medical Education Program or Rural Medical Scholars Program.

- When?

Summer Enrichment Program – last week of June to the first week of August (6 weeks)

# Health College Connection II

- College students at Tuskegee University are given an opportunity to interact with a fourth year medical student from MSM. This particular discussion focuses on how and why CPR works.





# Health College Connection II



- **Where?**  
Students will be selected from colleges and universities to participate in the Health College Connection Program. The students are selected from 17 counties in Central Alabama.

# Health College Connection II

- How?

Throughout the academic year, students will receive support and encouragement from HCCP staff. The year culminates with the HCC Summer Enrichment Program in which students are afforded the opportunity to shadow a health care provider for 6 weeks at the Central Alabama Veterans Health Care System.

- Why?

Alabama needs to strengthen health career recruitment as evidenced by the dwindling numbers of providers and in some cases, lack of providers in Alabama's medically under-served "Black Belt" communities. TAHEC developed the HCC program to address these needs.

# Health College Connection II



- Students entering medical school are supported and nurtured throughout the medical school experience. Here a fourth year medical student completes her rural clerkship in Tuskegee at a Community Health Center.

# Health College Connection II



- Educational support is provided for preceptors who work with HCC II students in a way that demonstrates the valuable partnership that exists between the HCC Program II, CAVHCS and the Community Health Centers.

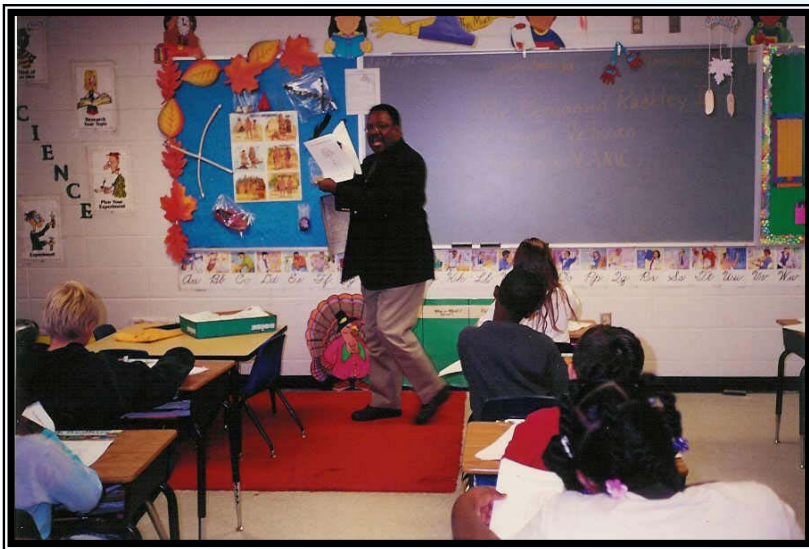
# Where Do We Go From Here?



- These are students who attend a k-12 school in Macon County, Alabama and traditionally have not chosen to participate in any enrichment program being offered in Tuskegee. There are barriers, however, that must be identified and addressed.

# A New Approach

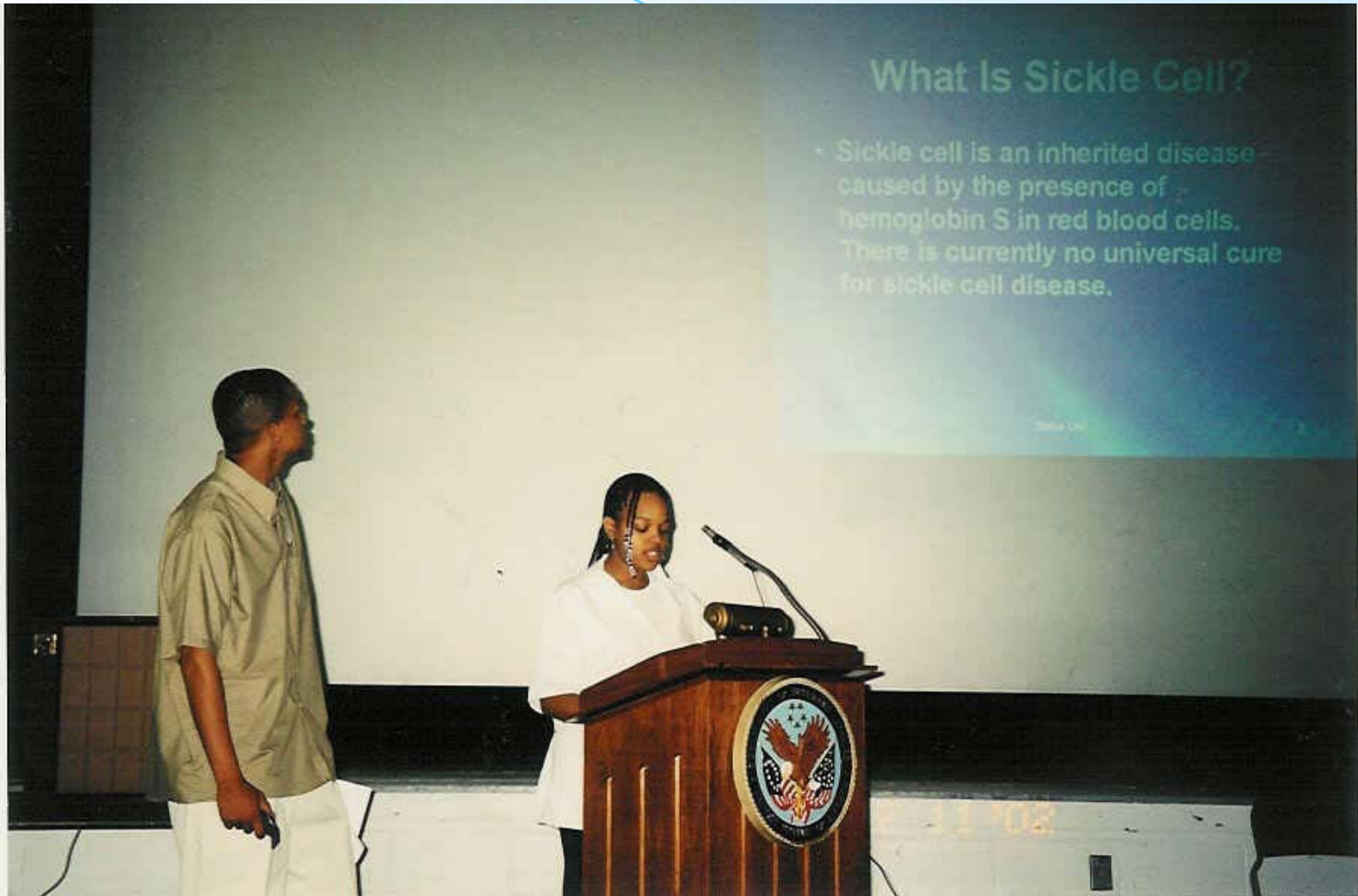
- One approach to addressing these barriers is to take small bites. Here you can see a recruiter talking with a small group of Junior High School students.



# Another Approach



- Non-traditional methods of recruiting are also employed by using a Veterans Recognition Day to address health career opportunities to 5<sup>th</sup> grade students at this school.



## What Is Sickle Cell?

- Sickle cell is an inherited disease caused by the presence of hemoglobin S in red blood cells. There is currently no universal cure for sickle cell disease.



